

artestudioginestrelle

artist residence - member of res artis
loc. Santa Maria di Lignano, 11 06081 Fossisi (PG) - Italy
tel/fax. +39.075.802.336 www.artestudioginestrelle.com

marina merli director
cell. +39.338.8134.078
marina.merli@alice.it



artestudio ginestrelle

ABOUT US

Ginestrelle is an ancient name which goes back to the time of St. Francis of Assisi and derives from the rich flowering of ginestra present in this place of peace.

The country house, in addition to being Bed & Breakfast, is also a centre where art exhibitions are displayed and where workshops and seminars are given.

Giving a soul to what can seem insignificant material of poor intrinsic value can be defined as art: the art of regeneration.

The furniture was made from salvaged materials such as oxidized iron, wood, and local sandstone.

In the property which lies in the heart of the regional Park of Mount Subasio, there are beautiful paths which lead the visitor to the source of "acqua rada", to the gorges and waterfalls of the Tescio river. Dssa. Marina Merli organizes guided visits to the discovery of minor religious places present in the medieval villages of the mountain of Assisi.



DURATION OF RESIDENCIES

1 week to 1 month

Expenses paid by artists

The program fee includes: accomodation and breakfast

In common, it also offers:

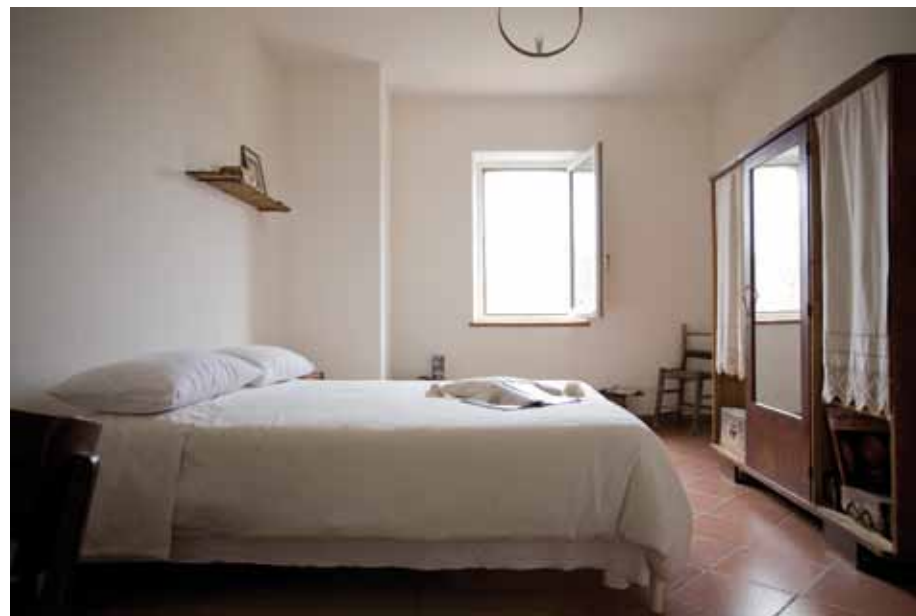
- kitchen
- living room area
- studio and working spaces
- internet access

RATES

Daily rates per double room and breakfast (min. €40 - max. €80)

CULTURAL ACTIVITIES

The Association Ginestrelle has the possibility to organize the vernissage of any exhibition. It can also organize press conferences and campaigns to inform the public.



SPECIAL WORKSHOP

The cultural association Arte Studio Ginestrelle programs monthly events on the theme of art, conservation, and protection of the environment in collaboration with the professors of the University of Perugia and artists of international fame.

SHORT DESCRIPTION OF PROGRAMME

The centre, open to writers, poets, photographers, actors and other artists from around the world. It offers the opportunity to work alone intensively and independently or together with other creative people from other countries. All artists can develop and interchange their ideas on contemporary art and culture.



HOW TO REACH THE CENTRE

BY PLANE

St Egidio Airport (PG): just a 10 minute drive from Assisi connected by Alitalia with Milan and by Ryanair with London-Stansted.

BY TRAIN

On the Rome - Florence line passing through Foligno, Assisi, Perugia.

BY CAR

Arrive at Piazza Matteotti in Assisi, cross under the arch of Porta Perlici, leaving Assisi behind you. Proceed for 4 km in the direction of Gualdo Tadino SS444.

Proceed for 1 km, turn to the right in the direction of Santa Maria di Lignano; proceed for 2 km, turn to the right for the Sanctuary of Madonna dei Tre Fossi, proceed for 1 km; turn left at the sign on to an unpaved local road, continue for 1 km, turn left into Casa Ginestrelle.